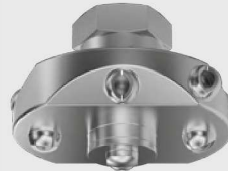


Rotating cleaning nozzle Gyro Series 577



Features:

- Cleaning with powerful nozzle inserts
- Suitable for very large tanks
- Available with many different flow rates
- Clogging-resistant and large clear cross-sections



Function video
www.lechler.com/de-en/medialibrary/videos-general-industry
 Or scan the QR code.

Series 577

Technical data:



Maximum operating temperature
95 °C



Maximum ambient temperature
200 °C



Installation
Vertically downwards



Bearing
Slide bearing made of PTFE



Material
Stainless steel 1.4404 (316L), PTFE



Weight
0.64–1.92 kg



Surface quality
Ra ≤ 0.8 µm
OUTSIDE



Surface quality
Ra ≤ 4.0 µm
INSIDE



Steam suitability
Conditionally suitable



Insertion diameter
110–156 mm



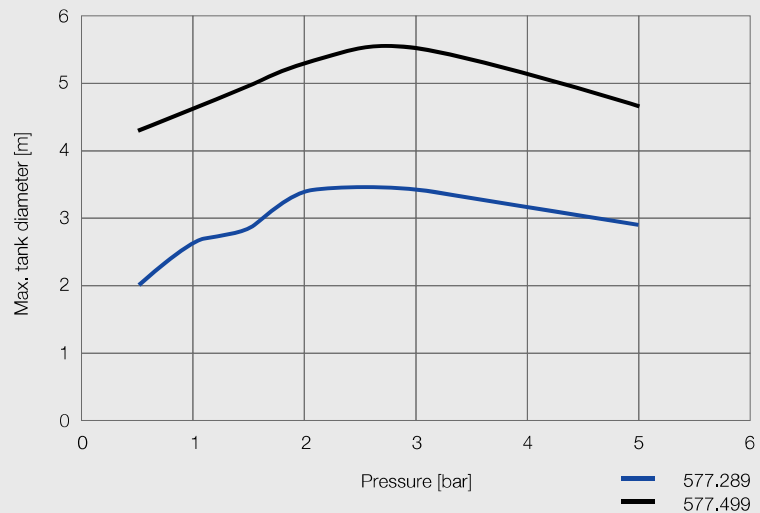
Recommended filter
Line strainer with a mesh size of 0.3 mm/50 mesh



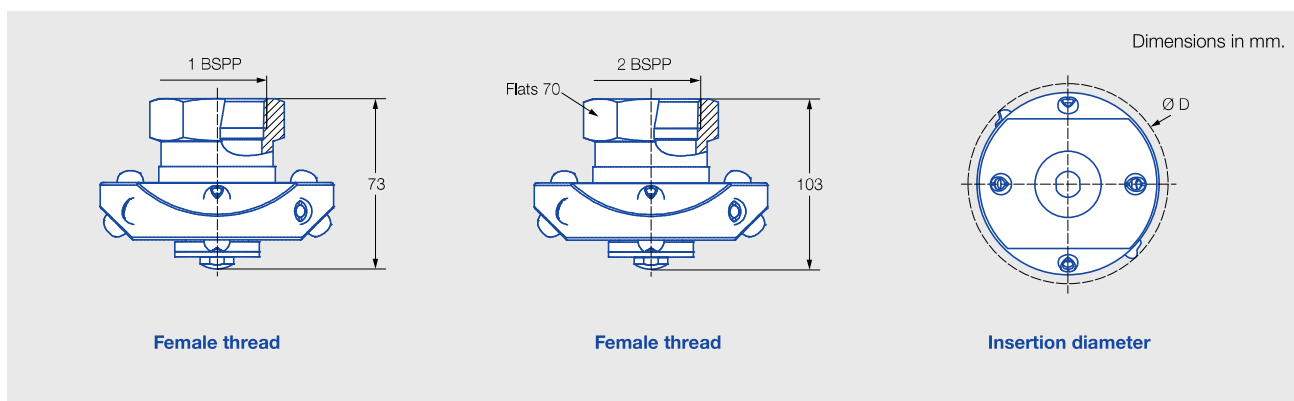
Recommended operating pressure
3 bar

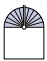





Max. tank diameter
The specified maximum tank diameter applies to the recommended operating pressure and is indicative only. The type of soiling is also decisive for the cleaning result.



Overview of maximum tank diameter depending on pressure



Spray angle	Ordering no.		V̇ water [l/min]				V̇ water	Dimensions [mm]	Max. tank diameter [m]	
	Type	Connection		p [bar] (p _{max} = 5 bar)						
		1 BSPP	2 BSPP	1.0	2.0	3.0	5.0	at 3 bar [m³/h]	Ø D	
180° 	577.283.1Y	AN		115	163	200	258	12.0	118	3.4
	577.363.1Y	AN		182	258	316	408	19.0	118	3.9
	577.403.1Y		AW	228	322	394	509	23.6	156	4.2
	577.433.1Y		AW	273	386	473	610	28.4	156	4.6
	577.523.1Y		AW	452	639	783	1,010	39.5	156	5.4
180° 	577.284.1Y	AN		115	163	200	258	12.0	118	3.4
	577.364.1Y	AN		182	258	316	408	19.0	118	3.9
	577.404.1Y		AW	228	322	394	509	23.6	156	4.2
	577.434.1Y		AW	273	386	473	610	28.4	156	4.6
	577.494.1Y		AW	380	538	659	851	39.5	156	5.4
270° 	577.285.1Y	AN		115	163	200	258	12.0	118	3.4
	577.365.1Y	AN		182	258	316	408	19.0	118	3.9
	577.405.1Y		AW	228	322	394	509	23.6	156	4.2
	577.435.1Y		AW	273	386	473	610	28.4	156	4.6
	577.495.1Y		AW	380	538	659	851	39.5	156	5.4
360° 	577.289.1Y	AN		115	163	200	258	12.0	110	3.4
	577.369.1Y	AN		182	258	316	408	19.0	110	3.9
	577.409.1Y		AW	228	322	394	509	23.6	156	4.2
	577.439.1Y		AW	273	386	473	610	28.4	156	4.6
	577.499.1Y		AW	380	538	659	851	39.5	156	5.4

NPT threads on request.

Information on operation

Compressed air can be used only for a short time for blowing dry. Use above the recommended pressure will have a negative effect on the cleaning result and wear.

Ordering Type + Connection = Ordering no.
example: 577.283.1Y + AN = 577.283.1Y.AN